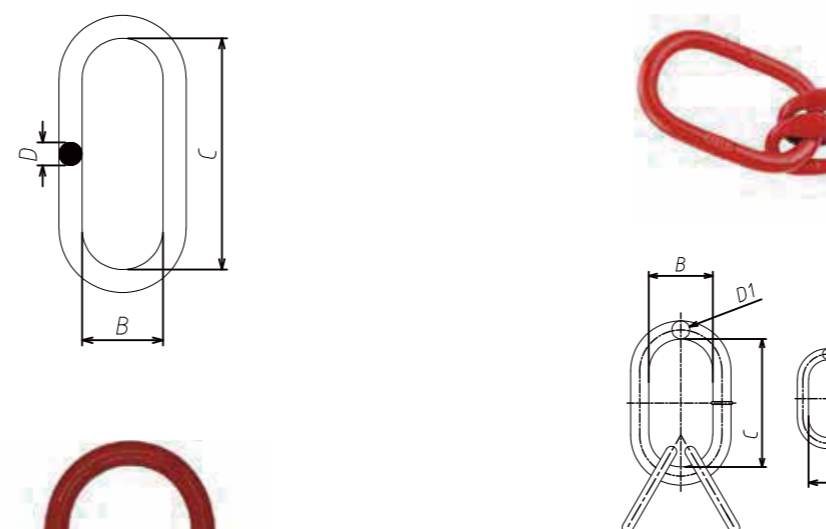
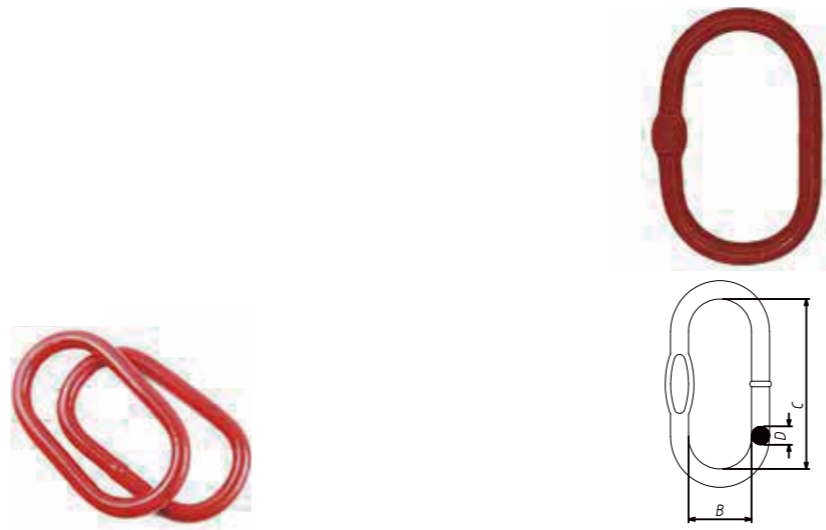


Rings

Rings

1. A342 Master Link

Part No.	Size (in.)	W.L.L (t)	Weight (kg)	Dimension (mm)		
				B	C	D
TKR0700	1/2	2.8	0.36	63.5	127	13
TKR0701	5/8	3.15	0.7	76	152	16
TKR0702	3/4	4.25	0.93	70	140	19
TKR0703	7/8	5.3	1.5	90	160	22
TKR0704	1	11.2	2.1	89	178	25
TKR0705	1-1/4	16	4.24	111	222	32
TKR0706	1-1/2	21.2	7.17	135	267	38
TKR0707	1-3/4	21.2	11.55	152	305	45
TKR0708	2	31.5	17.2	178	355	51
TKR0709	2-1/4	45	24.5	203	406	57
TKR0710	2-1/2	72	30.9	203	406	63.5
TKR0711	2-3/4	98	39.2	241	406	70
TKR0712	3	103	50.34	228	457	76
TKR0713	3-1/4	119	65.68	254	508	82.5
TKR0714	3-1/2	126	90.24	254	508	89
TKR0715	3-3/4	152	89.27	254	508	95
TKR0716	4	169	103	254	508	102
TKR0717	4-1/4	160	137	305	610	108
TKR0718	4-1/2	163	156	356	711	114
TKR0719	4-3/4	176	198	356	711	121
TKR0720	5	179	234	381	762	127

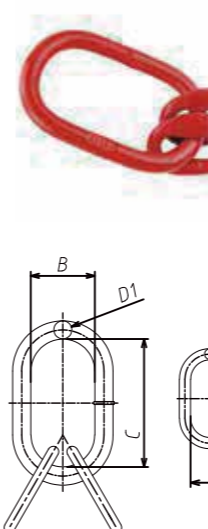
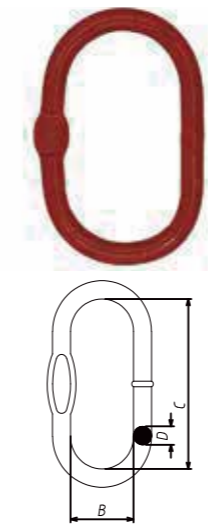


2. A343 European Type Master Link with Flat

Part No.	Chain Size(mm)		W.L.L (t)	Weight (kg)	Dimension (mm)		
	For 1 leg	For 2 leg			B	C	D
TKR0721	7	6	1.6	0.34	60	110	13
TKR0722	8	7	2.12	0.54	60	110	16
TKR0723	10	8	3.15	0.82	75	135	18
TKR0724	13	10	5.3	1.50	90	160	22
TKR0725	16	13	8	2.32	100	180	26
TKR0726	18	16	11.2	3.95	110	200	32
TKR0727	20	18	14	6.34	140	260	36
TKR0728	22	20	17	8.96	160	300	40
TKR0729	26	22	21.2	12.81	180	340	45
TKR0730	32	26	31.5	16.55	190	350	50
TKR0731	36	32	45	23.28	200	400	56
TKR0732	40	36	56	32.00	220	430	63
TKR0733	45	40	63	45.76	250	460	72

3. A344 US Type Master Link

Part No.	Size (in)	W.L.L (t)	Weight (kg)	Dimension (mm)		
				B	C	D
TKR0734	7/16	1.6	0.27	60	100	12
TKR0735	1/2	2.12	0.38	60	100	14
TKR0736	11/16	3.15	0.85	90	160	18
TKR0737	3/4	5.3	1.2	90	160	20
TKR0738	7/8	8	1.63	100	180	22
TKR0739	1	11.2	2.13	100	180	25
TKR0740	1-1/8	12.5	3.81	140	270	28
TKR0741	1-1/4	16	5.05	140	270	32
TKR0742	1-3/8	21.2	6.83	155	285	36
TKR0743	1-1/2	25	8.9	160	300	40
TKR0744	1-3/4	31.5	12.8	180	340	45
TKR0745	2	45	17.3	215	390	51



4. A345 US Type Master Link Assembly

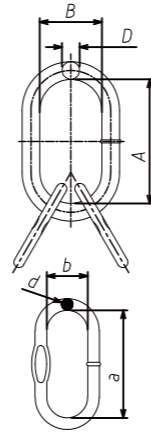
Part No.	Size (in.)	Weight (kg)	W.L.L (t)	Dimension (mm)					
				C	B	E	F	D1	D2
TKR0746	3/4	1.7	4.25	140	70	85	40	20	14
TKR0747	7/8	2.18	6.7	160	95	85	40	22	14
TKR0748	1	3.29	6.7	178	89	100	60	25	18
TKR0749	1-1/4	7.18	17	220	110	100	60	32	22
TKR0750	1-1/2	12.91	23.6	267	135	180	100	38	30
TKR0751	1-3/4	21.25	31.5	305	152	180	100	45	32
TKR0752	2	30.34	31.5	356	178	180	100	50	38
TKR0753	2-1/2	64.40	45	406	203	355	178	64	51
TKR0754	2-3/4	89.00	67	406	241	406	203	70	57

5. A346 Master Link Assembly with Flat

Part No.	Size (mm)	Weight (lbs)	W.L.L (t)	Dimension (mm)					
				A	B	D	a	b	d
TKR0755	6	2.60	2.36	135	75	18	54	25	13
TKR0756	7	2.73	3.15	135	75	18	60	38	13
TKR0757	8	4.84	4.25	160	90	22	70	34	16
TKR0758	10	7.48	6.7	180	100	26	85	40	18
TKR0759	13	13.42	11.2	200	110	32	115	50	22
TKR0760	16	21.96	17	260	140	36	140	65	26
TKR0761	18	41.58	21.2	340	180	45	180	100	32
TKR0762	20	49.72	26.5	350	190	50	180	100	32
TKR0763	22	55.44	31.5	350	190	50	180	100	36
TKR0764	26	77.44	45	400	200	56	180	100	40
TKR0765	28	103.40	50	430	220	63	180	100	45
TKR0766	32	146.21	63	460	250	72	200	110	50

Rings

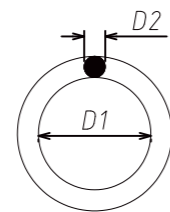
6. A347 US Type Master Link Assembly(Welded)



Part No.	Size (in.)	Weight (kg)	W.L.L (t)	Dimension (mm)					
				A	B	D	a	b	d
TKR0767	1/2	0.82	2.36	100	60	14	85	40	12
TKR0768	5/8	1.6	3.15	160	90	18	100	60	14
TKR0769	11/16	1.6	3.15	160	90	18	100	60	14
TKR0770	3/4	1.95	4.25	160	90	20	100	60	14
TKR0771	7/8	3.16	6.7	180	100	22	150	70	18
TKR0772	1-1/8	6.75	11.2	270	140	28	160	90	22
TKR0773	1-1/4	9.31	17	270	140	32	180	100	25
TKR0774	1-3/4	26.6	31.5	340	180	45	285	155	36
TKR0775	2	42.91	45	350	190	51	340	180	45

7. G80 Weldless Round Rings

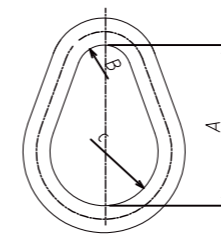
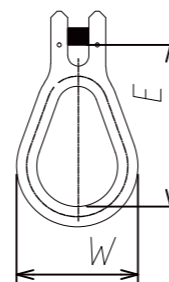
Part No.	W.L.L (t)	Weight (kg)	Size(mm)	
			D1	D2
TKR0776	1	0.11	50.8	9.5
TKR0777	1	0.2	50.8	12.7
TKR0778	1.5	0.45	76.2	15.9
TKR0779	1.5	0.49	84.0	15.9
TKR0780	1.7	0.67	76.2	19.1
TKR0781	1.7	0.84	101.6	19.1
TKR0782	3.3	1.2	101.6	22.2
TKR0783	2.5	1.55	139.5	22.2
TKR0784	4.9	1.59	101.6	25.4
TKR0785	4.9	2.1	139.5	25.4
TKR0786	4.9	2.87	152.4	28.6
TKR0787	7.7	3.1	127.0	31.8
TKR0788	7.7	3.6	152.4	31.8
TKR0789	8.6	4.5	152.4	34.9
TKR0790	10	6.8	203.2	38.1
TKR0791	10	7.32	222.3	38.1
TKR0792	10	8.22	254.0	38.1
TKR0793	15.9	17.8	304.8	50.8



8. Clevis Pear Shaped Ring

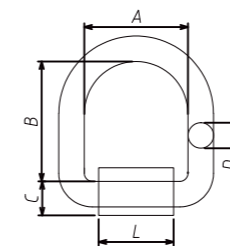


Part No.	Chain Size (mm)	Weight (kg)	W.L.L(t)	Dimension (mm)	
				E	W
TKR0794	7/8	0.26	2.5	39	90
TKR0795	10	0.5	4	49	108
TKR0796	13	1.1	6.8	62.5	138
TKR0797	16	2.55	10.3	79	180



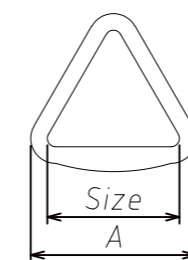
9. G80 Forged Pear Shape Link

Part No.	Size (mm)	W.L.L(t)		Weight (kg)	Dimension(mm)		
		Carbon(6:1)	Alloy(5:1)		A	B	C
TKR0798	10	0.8	1.6	0.1	57.2	19.0	38.2
TKR0799	13	1.3	3.2	0.25	76.2	25.4	50.8
TKR0800	16	1.9	4.0	0.5	95.3	31.8	63.5
TKR0801	19	2.7	5.6	0.8	114.0	38.1	76.2
TKR0802	22	3.8	6.4	1.26	133.4	44.0	89.0
TKR0803	25	4.9	11.0	1.95	152.0	50.0	102.0
TKR0804	28	5.4	13.9	2.92	171.5	57.2	114.3
TKR0805	32	7.6	16.3	3.75	190.5	64.0	127.0
TKR0806	35	9.3	19.5	5.12	209.6	69.8	139.7
TKR0807	38	11.4	24.7	6.5	228.6	76.2	152.4
TKR0808	45	-	38.5	10.2	419.1	88.9	177.8
TKR0809	51	-	46.5	15.3	304.8	101.6	203.2



10. D-Ring

Part No.	Size AxBxD	M.B.S (lbs)	Weight (kg)	Dimension (mm)	
				L	C
TKR0810	2-1/4"x 2-1/2"x 1/2"	12000	0.425	44.8	15.5
TKR0811	3"x 3"x 5/8"	18000	0.85	63	23.4
TKR0812	3"x 3"x 3/4"	26500	1.225	63	25.4
TKR0813	3"x 3"x 1"	47000	1.91	64	30.8
TKR0814	3"x 4"x 1"	47000	2.15	64	30.8



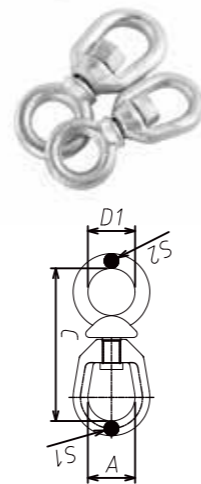
11. Delta Ring

Part No.	Size (in)	Breaking Strength (lbs)	A (mm)	Weight (kg)
TKR0815	3	18000	109.4	0.36
TKR0816	4	20000	142	0.62

Rings

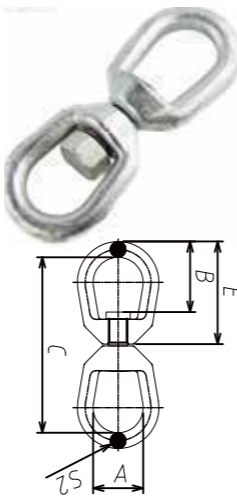
12. G401 Swivel Ring

Part No.	Size (in.)	Working Load Limit (lbs.)	Weight (lbs)	Dimensions (in.)				
				A	C	D1	S1	S2
TKR0817	1/4	850	0.13	0.75	2.25	0.62	0.25	0.25
TKR0818	5/16	1250	0.25	1	2.72	0.75	0.31	0.31
TKR0819	3/8	2250	0.61	1.25	3.44	1	0.38	0.38
TKR0820	1/2	3600	1.12	1.5	4.25	1.25	0.5	0.5
TKR0821	5/8	5200	1.75	1.75	5.13	1.5	0.62	0.62
TKR0822	3/4	7200	3.09	2	5.78	1.75	0.75	0.75



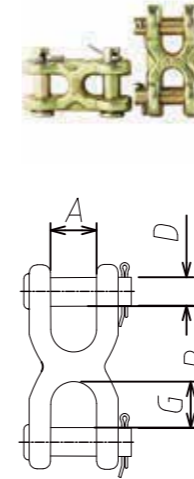
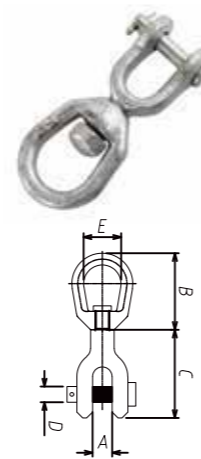
13. G402 Swivel Ring

Part No.	Size (in.)	Working Load Limit (lbs.)	Weight (lbs)	Dimensions (in.)				
				A	B	C	E	S2
TKR0823	1/4	850	0.21	0.75	1.31	2.94	1.69	0.25
TKR0824	5/16	1250	0.39	1	1.56	3.56	2.06	0.31
TKR0825	3/8	2250	0.75	1.25	1.88	4.31	2.5	0.38
TKR0826	1/2	3600	1.32	1.5	2.5	5.44	3.19	0.5
TKR0827	5/8	5200	2.49	1.75	3	6.56	3.88	0.62
TKR0828	3/4	7200	4.02	2	3.38	7.19	4.31	0.75
TKR0829	7/8	10000	6.25	2.25	3.93	8.38	5	0.87
TKR0830	1	12500	8.95	2.5	4.5	9.63	5.75	1
TKR0831	1-1/4	18000	16.37	3.13	4.94	11.44	6.75	1.25
TKR0832	1-1/2	45200	45.79	4	5.69	17.13	10	1.5



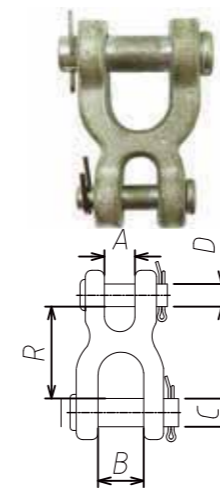
14. G403 Swivel Ring

Part No.	Size (in.)	Working Load Limit (lbs.)	Weight (lbs.)	Dimensions (in.)				
				A	B	C	D	E
TKR0833	1/4	850	0.21	0.47	1.69	1.69	0.25	0.75
TKR0834	5/16	1250	0.34	0.5	2.06	1.81	0.31	1
TKR0835	3/8	2250	0.66	0.63	2.5	2.25	0.38	1.25
TKR0836	1/2	3600	1.34	0.75	3.19	2.88	0.5	1.5
TKR0837	5/8	5200	2.48	0.94	3.88	3.44	0.63	1.75
TKR0838	3/4	7200	3.88	1.13	4.31	4	0.75	2
TKR0839	7/8	10000	5.87	1.34	5	4.53	0.88	2.25
TKR0840	1	12500	9.84	1.75	5.75	5.94	1.13	2.5
TKR0841	1-1/4	18000	15.75	2.06	7.06	6.38	1.38	3.13
TKR0842	1-1/2	45200	54.75	2.88	10	10.84	2.25	4



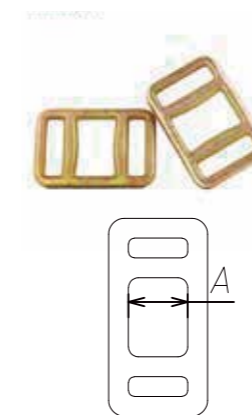
15. Twin Clevis Links

Part No.	Size (in.)	Working Load Limit (lbs.)	Weight (lbs.)	Dimensions (in.)			
				A	R	D	G
TKR0843	1/4-5/16	4700	0.32	0.47	1.18	0.38	0.43
TKR0844	3/8	6600	0.44	0.53	1.34	0.47	0.48
TKR0845	7/16-1/2	11250	1	0.465	1.75	0.56	0.63
TKR0846	5/8	16500	1.32	0.78	2.12	0.69	0.75



16. Double Clevis Links

Part No.	Size (in.)	Working Load Limit (lbs.)	Weight (lbs)	Dimensions (in.)				
				A	B	C	D	R
TKR0847	1/4	2600	0.44	0.5	0.75	0.5	0.31	1.5
TKR0848	5/16-3/8	5400	0.81	0.56	1	0.63	0.44	1.81
TKR0849	7/16	7000	1.287	0.69	1.13	0.69	0.56	2.19
TKR0850	1/2	9200	1.68	0.81	1.25	0.75	0.63	2.47
TKR0851	5/8	17500	2.91	0.78	1.63	1	0.75	3.03



17. One Way Lashing Buckle

Part No.	Size (in.)	WLL (t)	Breaking Strength (t)	Weight (kg)	Dimension (mm)
					A
TKR0852	30-32	3	6	0.225	32
TKR0853	40-42	4	8	0.265	42
TKR0854	50-52	5	10	0.41	52

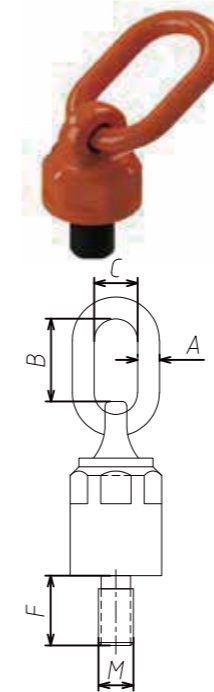
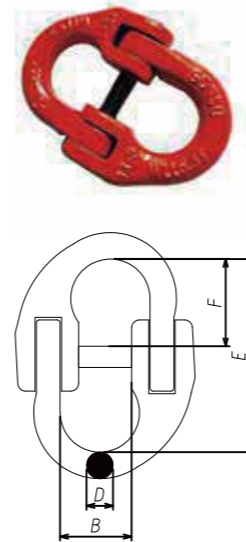
Rings

环类

20. Swivel Hoist Ring

18. G80 Connecting Link

Part NO.	Size (mm)	W.L.L (t)	Weight (lbs.)	Dimensions (in)			
				B	D	F	E
TKR0855	6	1.12	0.22	0.6	0.32	0.70	1.80
TKR0856	7	1.5	0.35	0.77	0.35	0.96	2.34
TKR0857	8	2	0.44	0.77	0.35	0.97	2.44
TKR0858	10	3.15	0.73	1.02	0.46	1.10	2.75
TKR0859	13	5.3	1.49	1.18	0.61	1.44	3.58
TKR0860	16	8	2.57	1.42	0.75	1.61	4.00
TKR0861	18	10	3.19	1.63	0.83	1.59	4.35
TKR0862	20	12.5	4.38	1.73	0.91	1.93	4.72
TKR0863	22	15	6.78	1.93	0.96	2.48	6.00
TKR0864	26	21.2	11.59	2.3	1.24	2.72	6.39
TKR0865	32	31.5	20.79	2.66	1.52	3.11	7.64
TKR0866	38	45.3	39.53	3.47	1.87	4.03	9.69

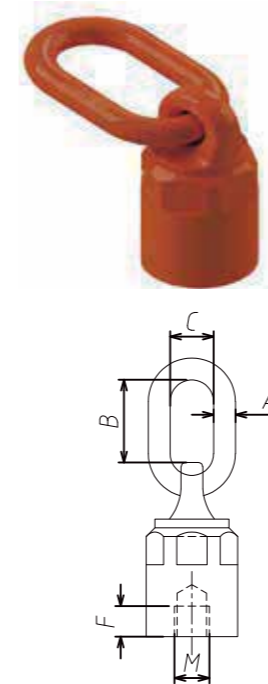
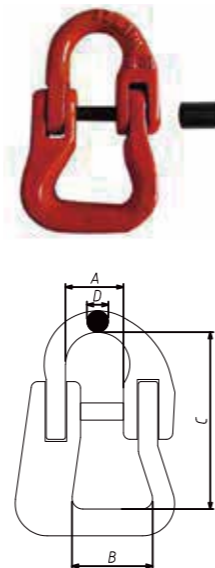


Part No.	Size (mm)	Working Load Limit(t)			Weight (kg)	Dimensions (mm)					
		X	Y	Z		A	B	C	F	M	T
TKR0876	M8x1.25-6g	0.3	0.4	0.6	0.54	13	42	30	15	8	125
TKR0877	M10x1.5-6g	0.45	0.6	0.9	0.58	13	42	30	15	10	125
TKR0878	M12x1.75-6g	0.6	0.7	1.2	0.57	13	42	30	15	12	125
TKR0879	M14x2.0-6g	1	1.25	2	0.56	13	42	30	20	14	125
TKR0880	M16x2.0-6g	1.3	1.5	2.6	0.6	13	42	30	20	16	125
TKR0881	M18x2.5-6g	1.8	2	3.6	3	20	67	40	25	18	195
TKR0882	M20x2.5-6g	2.15	2.5	4.2	3	20	67	40	25	20	195
TKR0883	M22x2.5-6g	2.15	2.5	4.2	3	20	67	40	25	22	195
TKR0884	M24x3.0-6g	3.5	4	7	3	20	67	40	30	24	195
TKR0885	M30x3.5-6g	6	7.5	10	4.8	22	95	51	40	30	259
TKR0886	M33x3.5-6g	6	7.5	10	4.8	22	95	51	40	33	259
TKR0887	M36x4.0-6g	8	10	15	4.9	22	95	51	45	36	259
TKR0888	M39x4.0-6g	8	10	15	4.8	22	95	51	45	39	259
TKR0889	M42x4.5-6g	12	13	17	8	26	108	63	63	42	293
TKR0890	M45x4.5-6g	12	13	17	8	26	108	63	68	45	298
TKR0891	M48x5.0-6g	13	16	18	7.8	26	108	63	68	48	298
TKR0892	M52x5.0-6g	14	20	25	13.8	32	120	70	84	52	362
TKR0893	M56x5.5-6g	16	22	28	13.5	32	120	70	84	56	362
TKR0894	M60x5.5-6g	16	22	28	13.1	32	120	70	90	60	368
TKR0895	M64x6.0-6g	16	25	28	12.8	32	120	70	95	64	373
TKR0896	M72x6.0-6g	31.5	40	50	43	46	130	90	108	72	448
TKR0897	M80x6.0-6g	35	48	50	44	46	130	90	120	80	460
TKR0898	M90x6.0-6g	40	50	50	44	46	130	90	135	90	475
TKR0899	M100x6.0-6g	40	50	50	44	46	130	90	135	100	475

21. Swivel Hoist Ring- Nut Type

19. G80 Webbing Connecting Link

Part NO.	Size (in.)	W.L.L (t)	Weight (lbs.)	Dimensions (in)			
				A	B	C	D
TKR0867	1/4	1.12	0.44	0.63	1.57	2.2	0.3
TKR0868	5/16	2	0.66	0.77	1.57	2.59	0.35
TKR0869	3/8	3.15	1.5	1.02	1.54	3.03	0.46
TKR0870	1/2	5.3	3.24	1.18	2.17	3.69	0.61
TKR0871	5/8	8	5.07	1.42	2.58	4.72	0.75
TKR0872	3/4	12.5	7.27	1.73	3.15	5.43	0.91
TKR0873	7/8	15	15.17	1.97	4.96	7.09	1.02
TKR0874	1	21.2	23.39	2.28	5.98	8.25	1.18
TKR0875	1-1/4	31.5	41.67	2.85	6.3	10.98	2.17



Part No.	Size (mm)	Working Load Limit(t)			Weight (kg)	Dimensions (mm)				
		X	Y	Z		A	B	C	M	T
TKR0900	M8x1.25-6g	0.3	0.4	0.6	0.54	13	42	30	8	125
TKR0901	M10x1.5-6g	0.45	0.6	0.9	0.58	13	42	30	10	125
TKR0902	M12x1.75-6g	0.6	0.7	1.2	0.57	13	42	30	12	125
TKR0903	M14x2.0-6g	1	1.25	2	0.56	13	42	30	14	125
TKR0904	M16x2.0-6g	1.3	1.5	2.6	0.6	13	42	30	16	125
TKR0905	M18x2.5-6g	1.8	2	3.6	3	20	67	40	18	195
TKR0906	M20x2.5-6g	2.15	2.5	4.2	3	20	67	40	20	195
TKR0907	M22x2.5-6g	2.15	2.5	4.2	3	20	67	40	22	195
TKR0908	M24x3.0-6g	3.5	4	7	3	20	67	40	24	195
TKR0909	M30x3.5-6g	6	7.5	10	4.8	22	95	51	30	259
TKR0910	M33x3.5-6g	6	7.5	10	4.8	22	95	51	33	259
TKR0911	M36x4.0-6g	8	10	15	4.9	22	95	51	36	259
TKR0912	M39x4.0-6g	8	10	15	4.8	22	95	51	39	259
TKR0913	M42x4.5-6g	12	13	17	8	26	108	63	42	293
TKR0914	M45x4.5-6g	12	13	17	8	26	108	63	45	298
TKR0915	M48x5.0-6g	13	16	18	7.8	26	108	63	48	298
TKR0916	M52x5.0-6g	14	20	25	13.8	32	120	70	52	362
TKR0917	M56x5.5-6g	16	22	28	13.5	32	120	70	56	362
TKR0918	M60x5.5-6g	16	22	28	13.1	32	120	70	60	368
TKR0919	M64x6.0-6g	16	25	28	12.8	32	120	70	64	373
TKR0920	M72x6.0-6g	31.5	40	50	43	46	130	90	72	448
TKR0921	M80x6.0-6g	35	48	50	44	46	130	90	80	460
TKR0922	M90x6.0-6g	40	50	50	44	46	130	90	90	475
TKR0923	M100x6.0-6g	40	50	50	44	46	130	90	100	475

Rings

22. Lifting Point



Part No.	Size(mm)	Thread	Working Load Limit	Weight (kg)	Dimensions (mm)				
					A	B	D	F	S
TKR0924	M8x1.25-6g	M8	0.3	0.5	33	37	14	98	6
TKR0925	M10x1.5-6g	M10	0.63	0.5	33	37	14	98	6
TKR0926	M12x1.75-6g	M12	1	0.5	33	37	14	98	8
TKR0927	M14x2.0-6g	M14	1.2	0.5	33	37	14	98	10
TKR0928	M16x2.0-6g	M16	1.5	0.5	33	37	14	98	10
TKR0929	M18x2.5-6g	M18	2	1.3	50	54	17	140	12
TKR0930	M20x2.5-6g	M20	2.5	1.3	50	54	17	140	12
TKR0931	M24x3.0-6g	M24	4	1.4	50	54	17	140	14
TKR0932	M27x3.0-6g	M27	4	2.8	60	65	23	170	17
TKR0933	M30x3.5-6g	M30	5	3.1	60	65	23	170	17
TKR0934	M36x4.0-6g	M36	7	3.3	60	65	23	178	22
TKR0935	M39x4.0-6g	M39	8	5.8	77	85	27	225	22
TKR0936	M42x4.5-6g	M42	10	6.3	77	85	27	225	24
TKR0937	M45x4.5-6g	M45	15	10.8	95	104	36	256	24
TKR0938	M48x5.0-6g	M48	20	11.6	95	104	36	259	27

